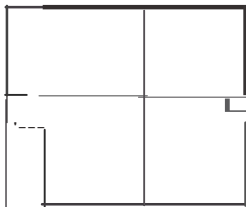


DECORATION MADE EASY

For Sheet Vinyl

GETTING STARTED

Measure the width and length of the room, include any recesses and also measure from the outside of any door jams. Allow at least 100mm extra for salvage on all sides.



WHAT TOOLS DO I NEED?

- + STANLEY KNIFE
- + TAPE MEASURE
- + METAL RULER/STRAIGHT EDGE
- + PENCIL
- + DOUBLE SIDED TAPE/ OR SHEET VINYL ADHESIVE

PREPARING THE SUB FLOOR

Gerflor vinyl can be installed loose over any clean smooth surface that is dry and hard.

Concrete: Fill any gaps with a leveling compound and ensure the concrete is perfectly cured (dry).

Existing Flooring: Ideally, any existing floor should be removed. However, if the original floor is properly adhered and in good condition you can loose lay over existing vinyl or ceramic floor. The floor should be leveled with a leveling compound to remove any irregularities or grout marks.

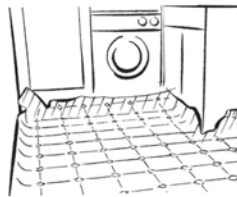
Timber: Ensure floorboards are secure. Sand or fill any irregularities. If timber is in poor condition, cover it with Masonite underlay sheets. Follow the manufacturers instructions.

INSTALLATION

Switch under floor heating off 24 hours prior to installation

Allow vinyl to relax, unrolled for 24 hours prior to laying
(Room temperature should be 15°C +)

Place the vinyl on the floor, adjusting so the pattern looks straight when you walk into the room. Cut the vinyl to size allowing an extra 50mm salvage on all sides



Where necessary make relief cuts on corners and fixtures to allow the Gerflor vinyl to lay flat. Trim the vinyl beginning at the corners

External corners need a relief cut on the actual corner of the vinyl.



Internal corners will need a diagonal cut across the corner (a little at a time) until the vinyl fits snugly into the corner



Once the vinyl is lying flat, move around the perimeter of the room, using a straight edge pressed hard against the bottom corner of the wall. The effect should be the vinyl kicks up at a 45° angle. With your Stanley knife in a vertical position cut the vinyl between the wall and the straight edge.



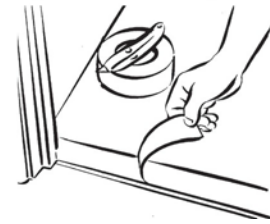
Sweep the vinyl flat with a soft broom, making any additional cuts so that the vinyl lies perfectly flat.

Ideally you should finish with a gap of 1-2 mm to all vertical surfaces.

Gerflor vinyl can now be installed either by gluing the vinyl to the sub floor or semi-loose laying.

Semi-loose laying: The perimeter can be fixed with double-sided tape, we recommend to

use double-sided tape in doorways and under heavy movable objects such as washing machines or fridges.



Gluing: We recommend using Bostik Instant Pro sheet vinyl adhesive. Follow manufacturers guidelines.

HOW DO I LOOK AFTER MY GERFLOR FLOOR?

For best results apply Roberts vinyl floor polish, this will protect your vinyl and help maintain an 'as new' appearance.

For general cleaning we recommend Roberts vinyl floor cleaner. Never use abrasive pads or cleaners, strong alkaline detergents, ammonia, chlorine detergents or undiluted bleaches.

Always wipe spills away immediately with a damp cloth or sponge.

When moving furniture or heavy objects, place protective cloths or carpet face down under the legs or castors.

Be aware that rubber can permanently mark your floor by leaving a yellowish stain. This includes rubber used in rubber-backed mats, rubber wheels on trolleys, rubber feet on stools and other furniture, rubber soles on low cost shoes or slippers.

GUARANTEE

Gerflor Vinyl is covered by a 5 year conditional guarantee for a detailed copy of the guarantee, contact Gerflor Australasia

For more detailed information contact:

1800 060 785

www.gerflor.com.au

Gerflor
theflooringroup